

Table of contents.....01

12" - 315 mm flush valve.....02

12 3/4" flush line.....03

15" - 355 mm flush valve.....04

6" cast iron gate valve with insulated rod..... 05

Check valve for 6 5/8" PVC pipe..... 06

Check valve for 8 5/8" PVC pipe..... 07

Air-vacuum relief valve on 12 3/4" pipe.....08

Multi-level drain dam..... 09

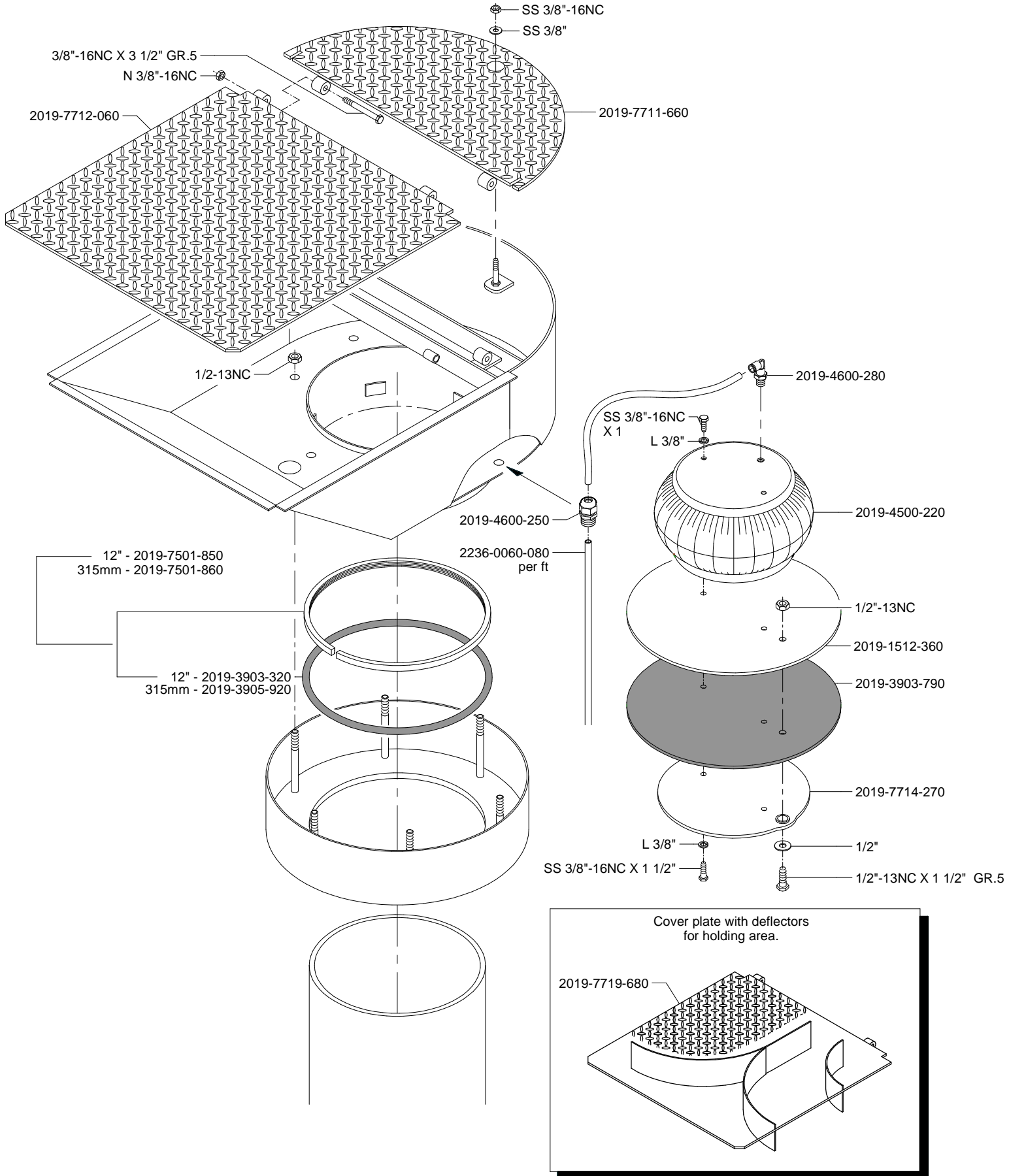
Manifold vacuum base for 8 5/8" PVC pipe.....10

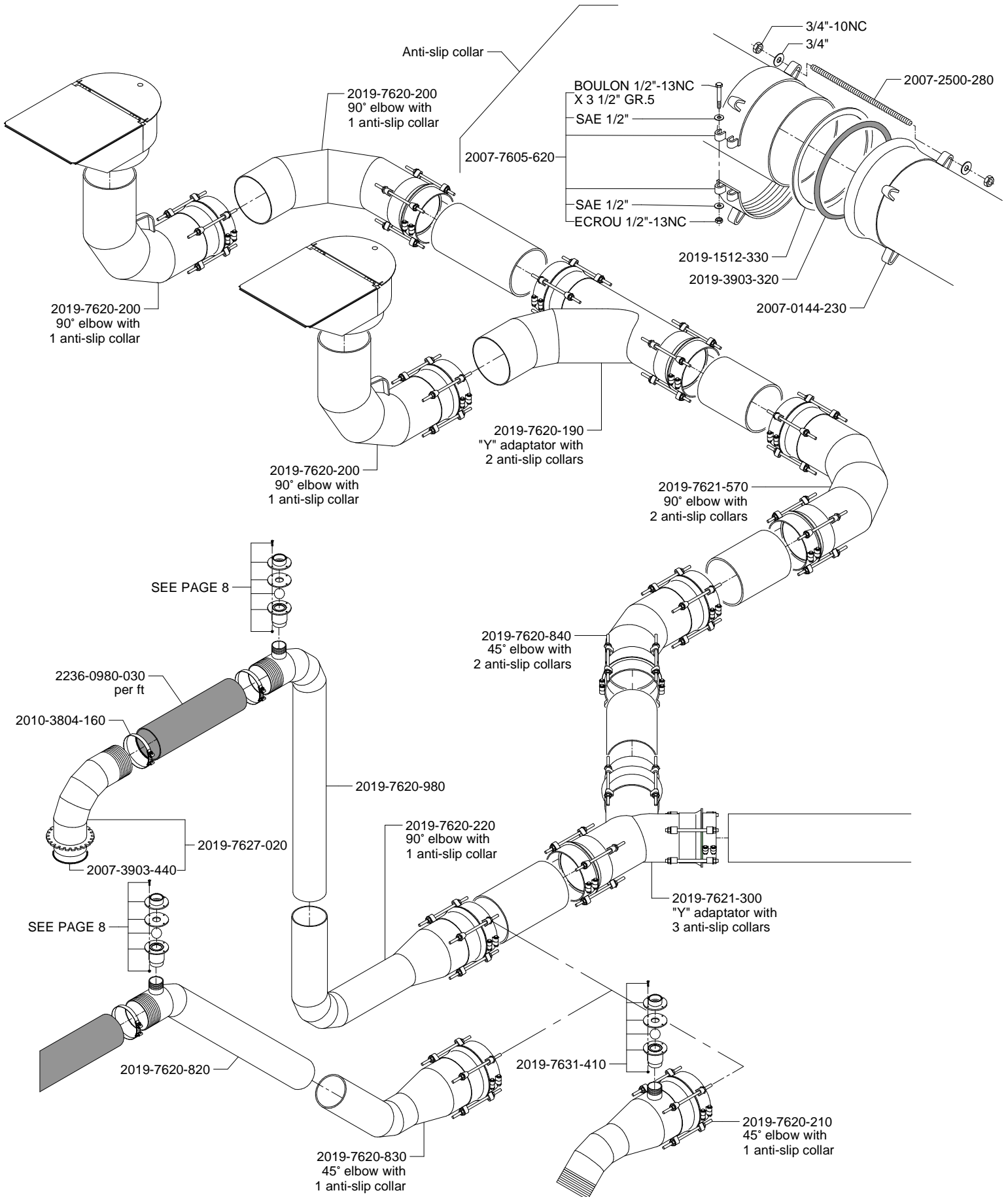
Diaphragm switch.....11

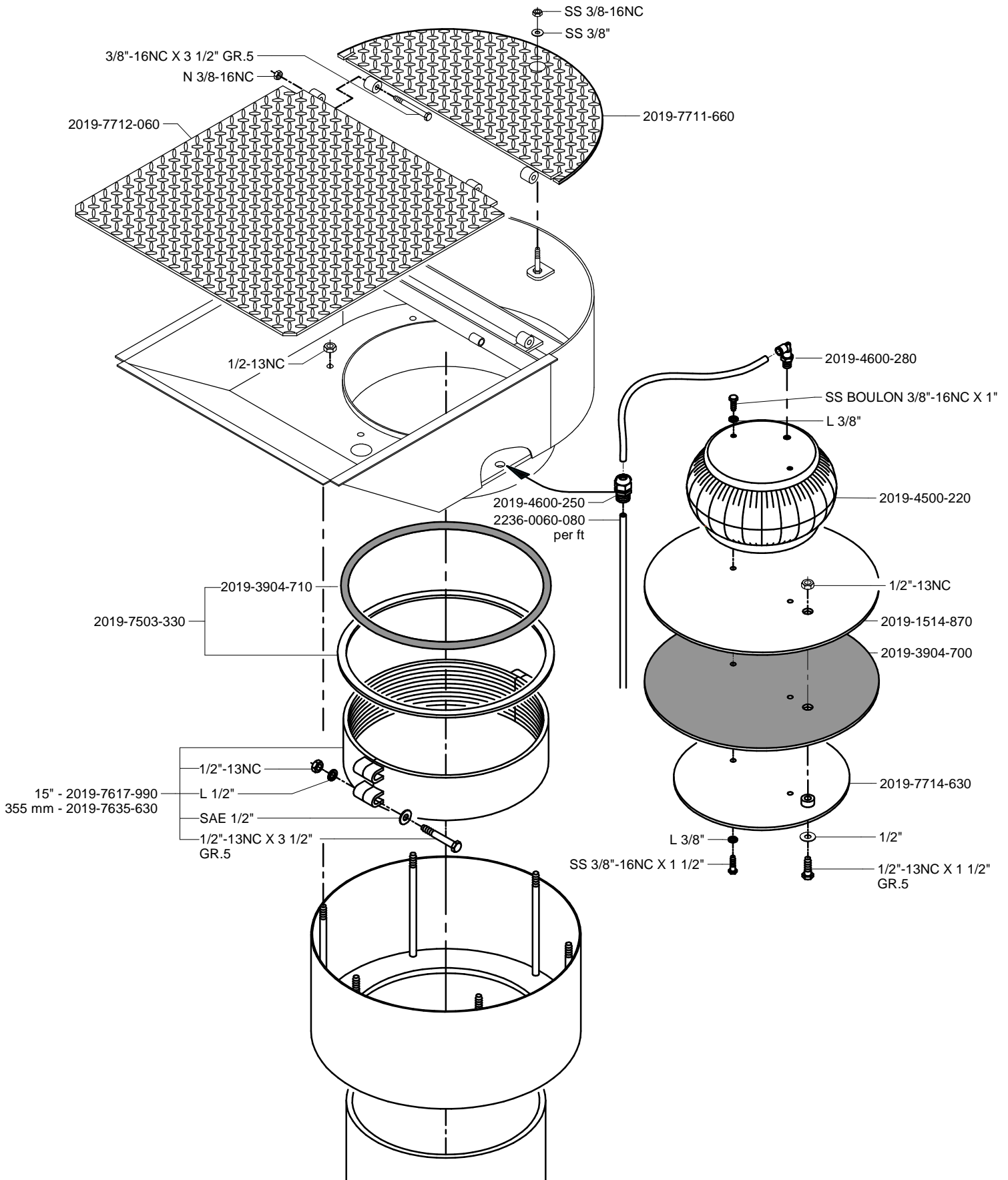
Air valve control panel..... 12

12" circular flush valve (previous version)..... 13

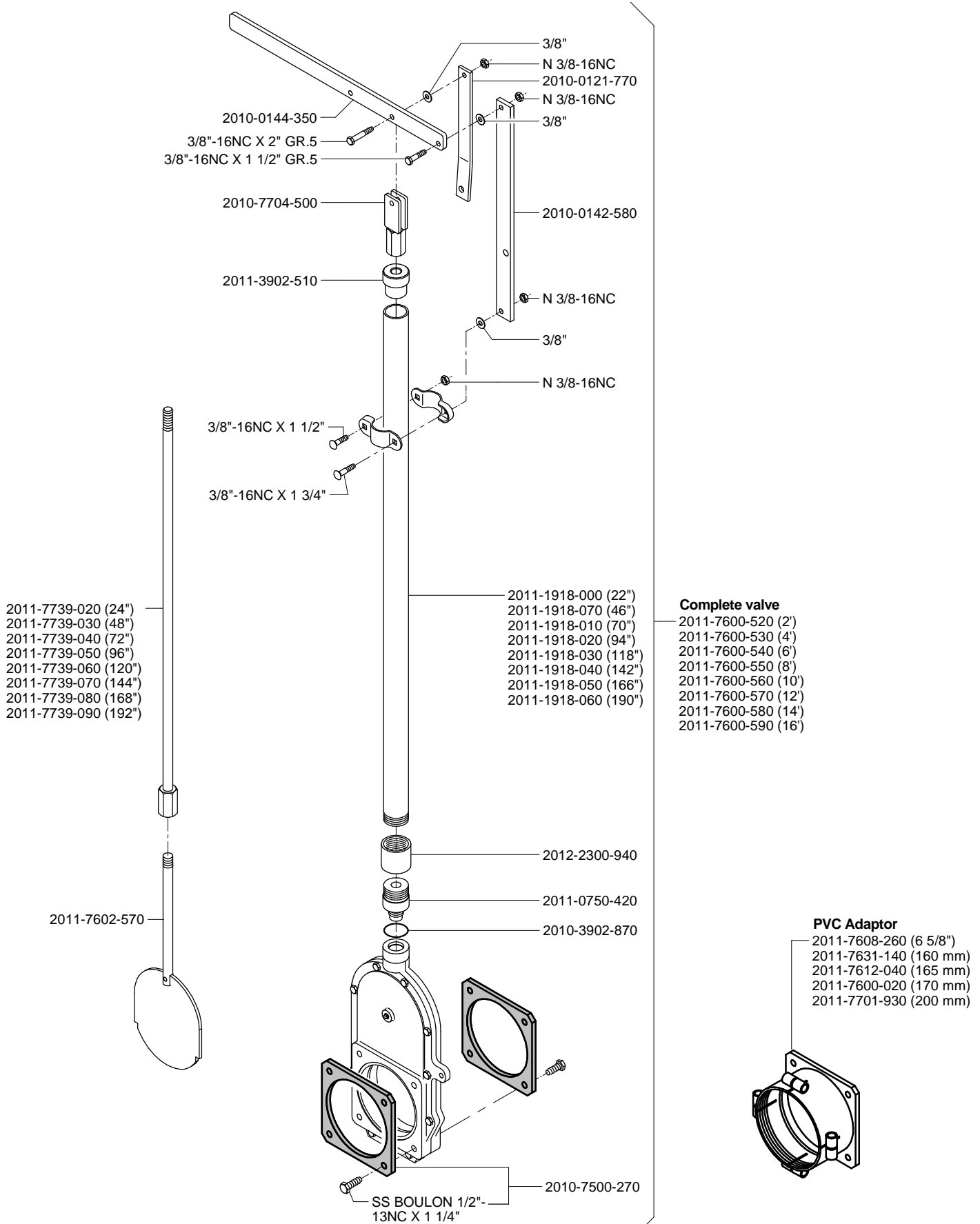
Hardware Identification	
Type	Designation
Hexagonal bolt	-
Carriage bolt	CB
Square head bolt	SB
Socket head cap screw	SCS
Socket head set screw	SSS
Flat head cap screw	FCS
Hexagon nut	-
Hexagon nylon lock nut	N
Hexagon oval lock nut	OVL
Hexagon tri-lock nut	TRI
Castle nut	CSL
Flange nut	FLN
Wing nut	WNG
Flat washer	-
Lock washer	L
SAE washer	SAE
Large ext. dia. washer	LD
Small ext. dia. washer	SD
Stainless steel bolts parts	SS



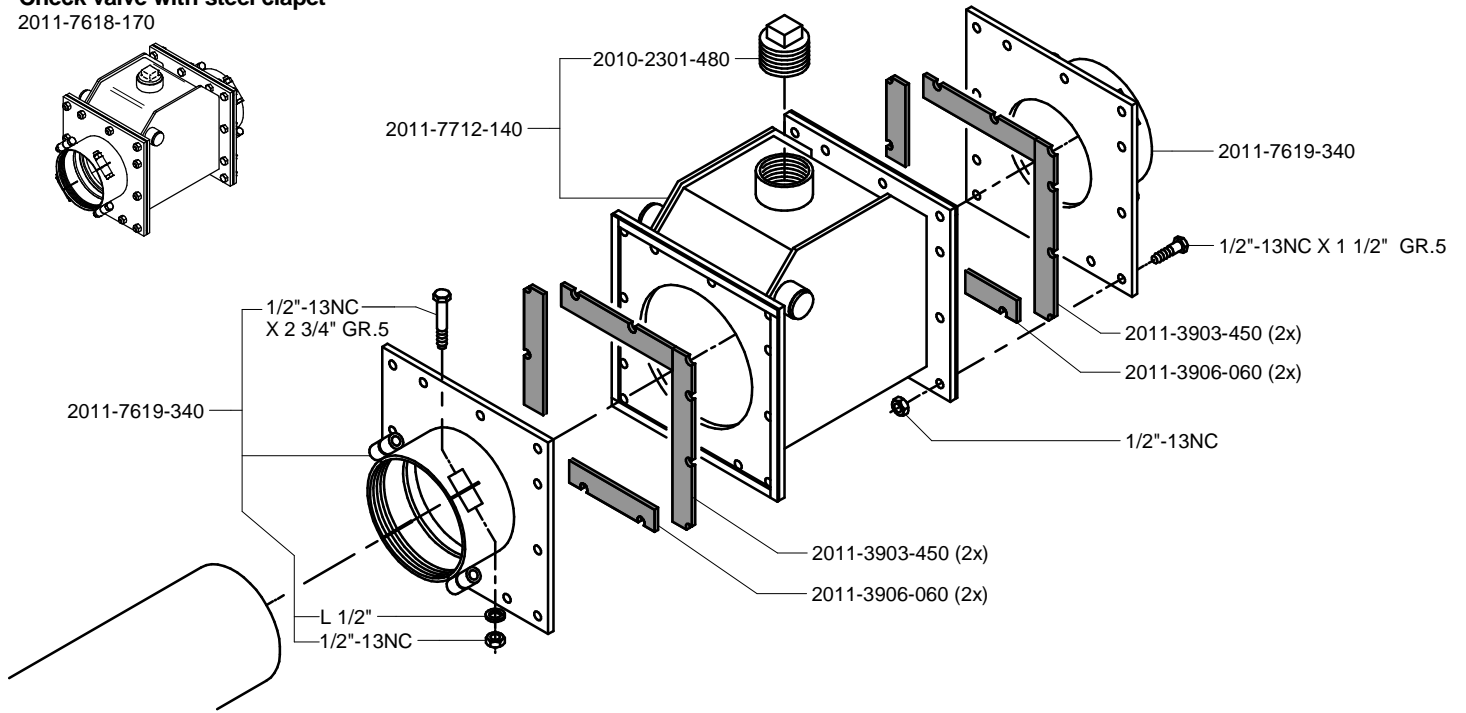




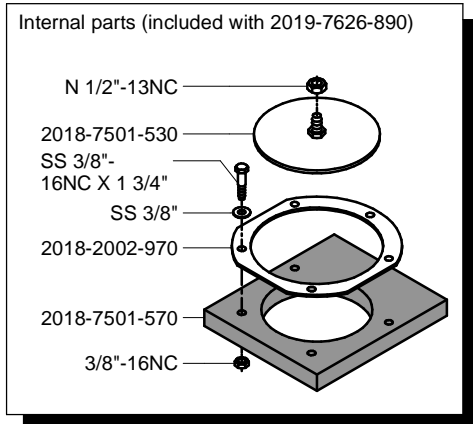
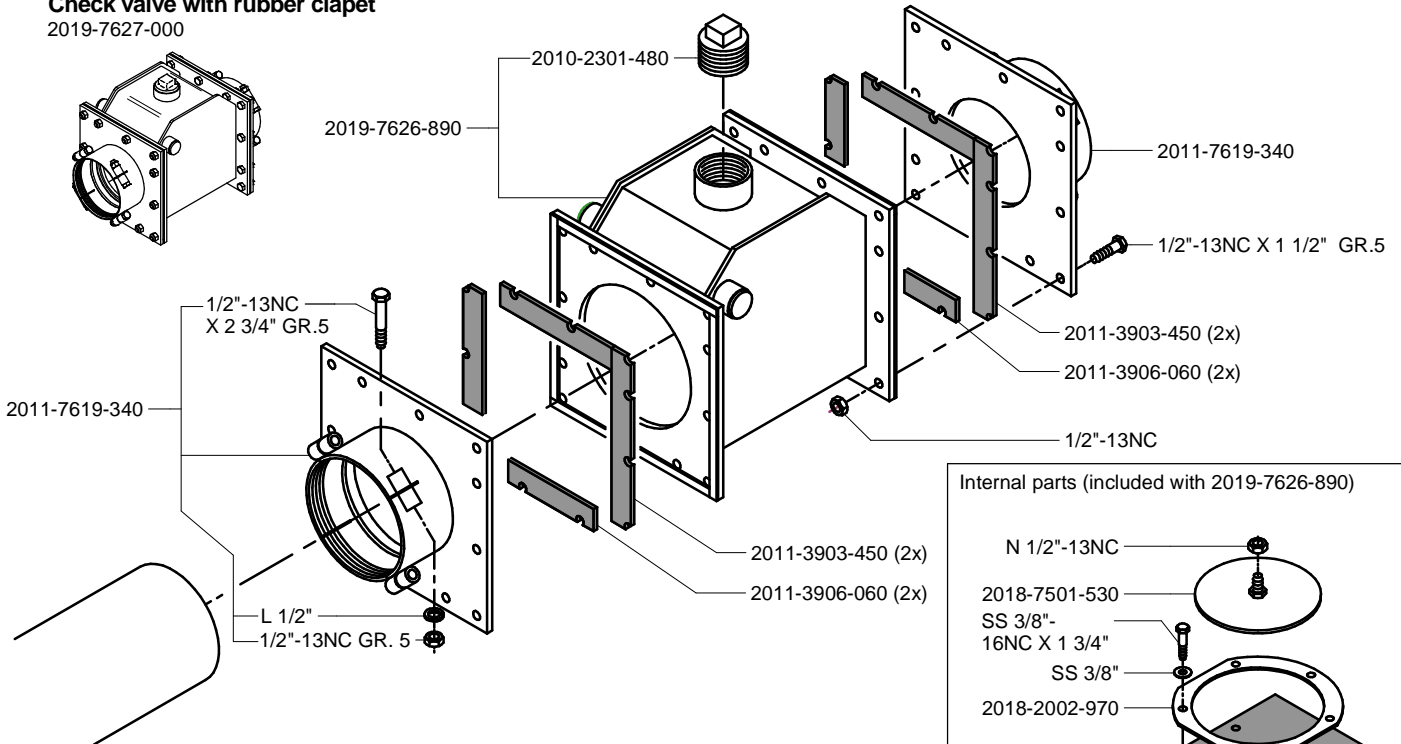
6" CAST IRON GATE VALVE WITH INSULATED ROD



Check valve with steel clapet
2011-7618-170

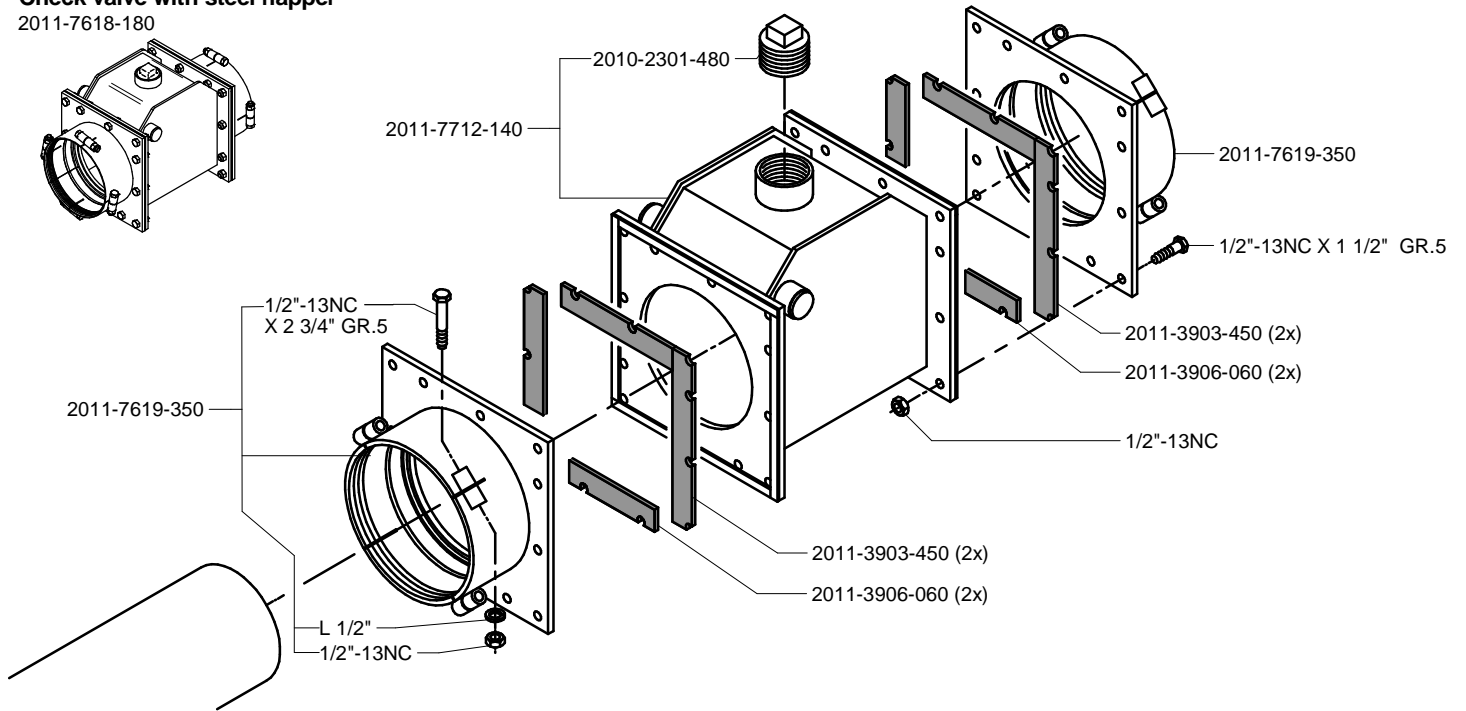


Check valve with rubber clapet
2019-7627-000



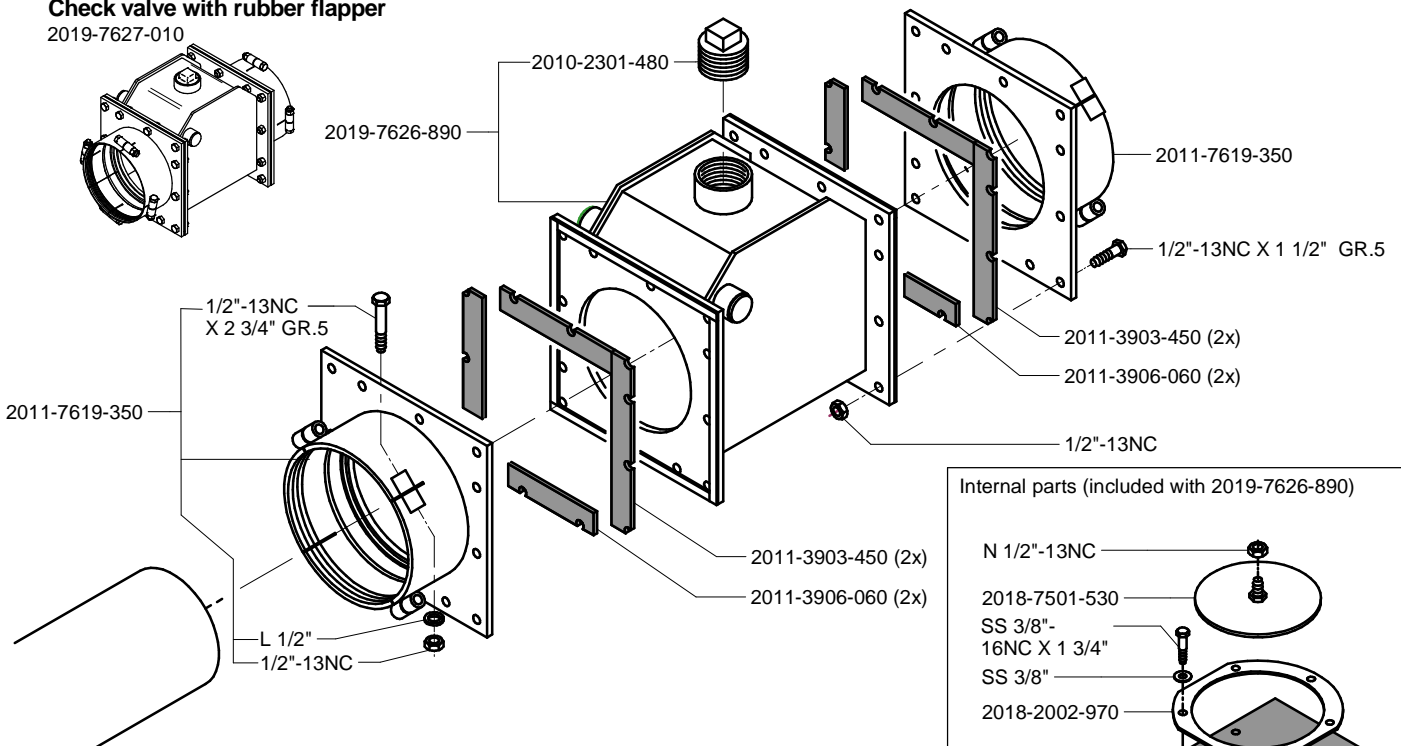
Check valve with steel flapper

2011-7618-180

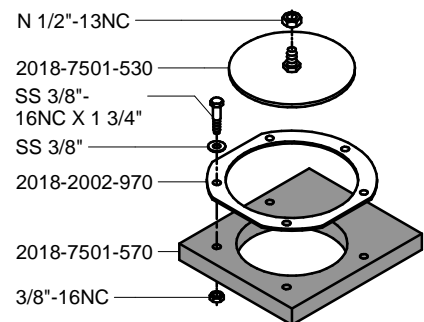


Check valve with rubber flapper

2019-7627-010



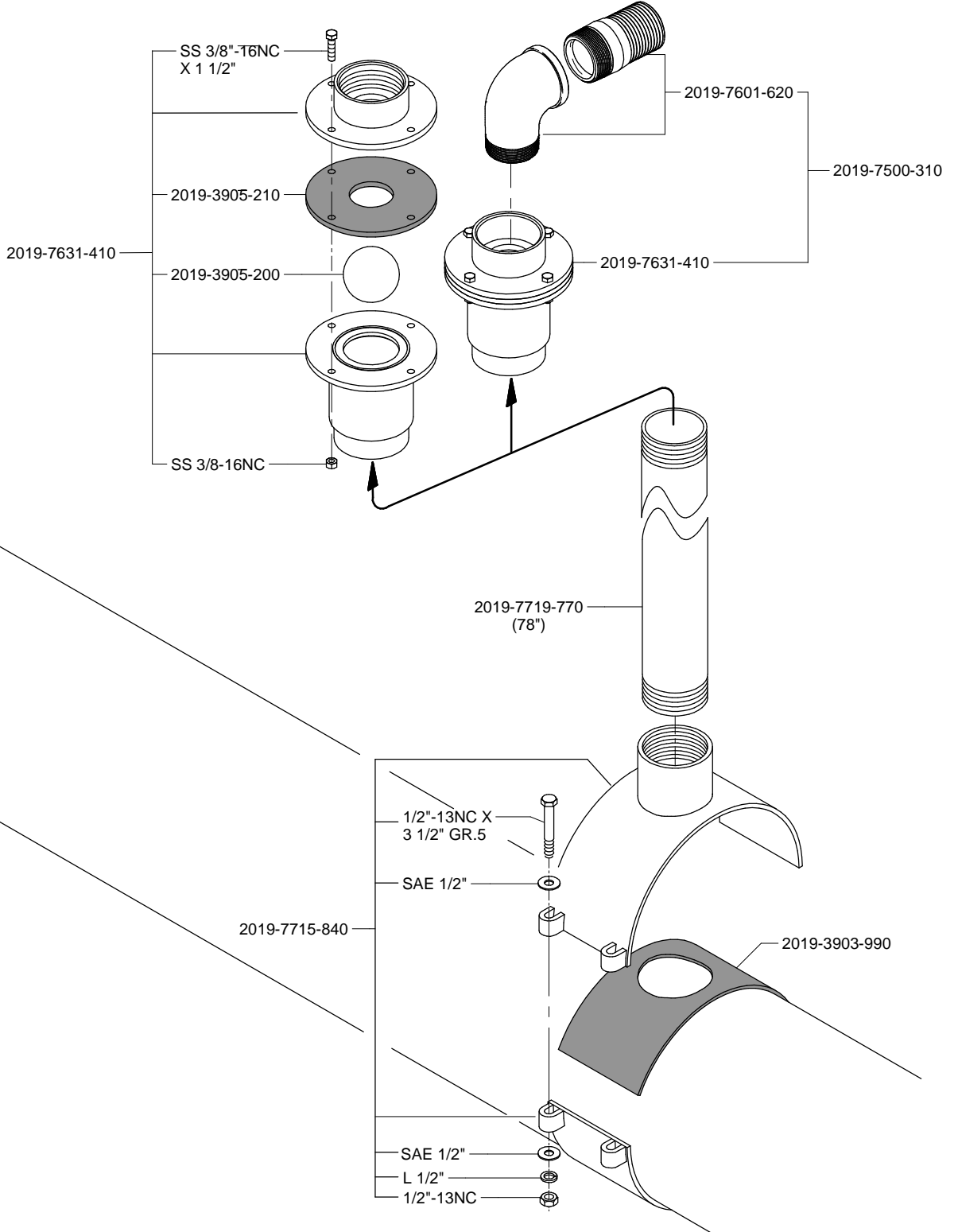
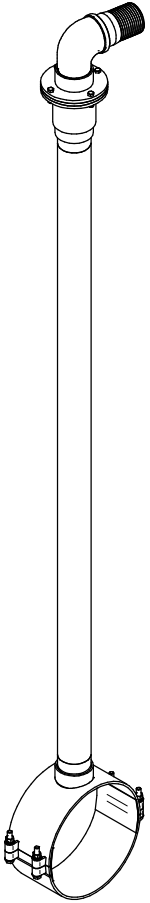
Internal parts (included with 2019-7626-890)

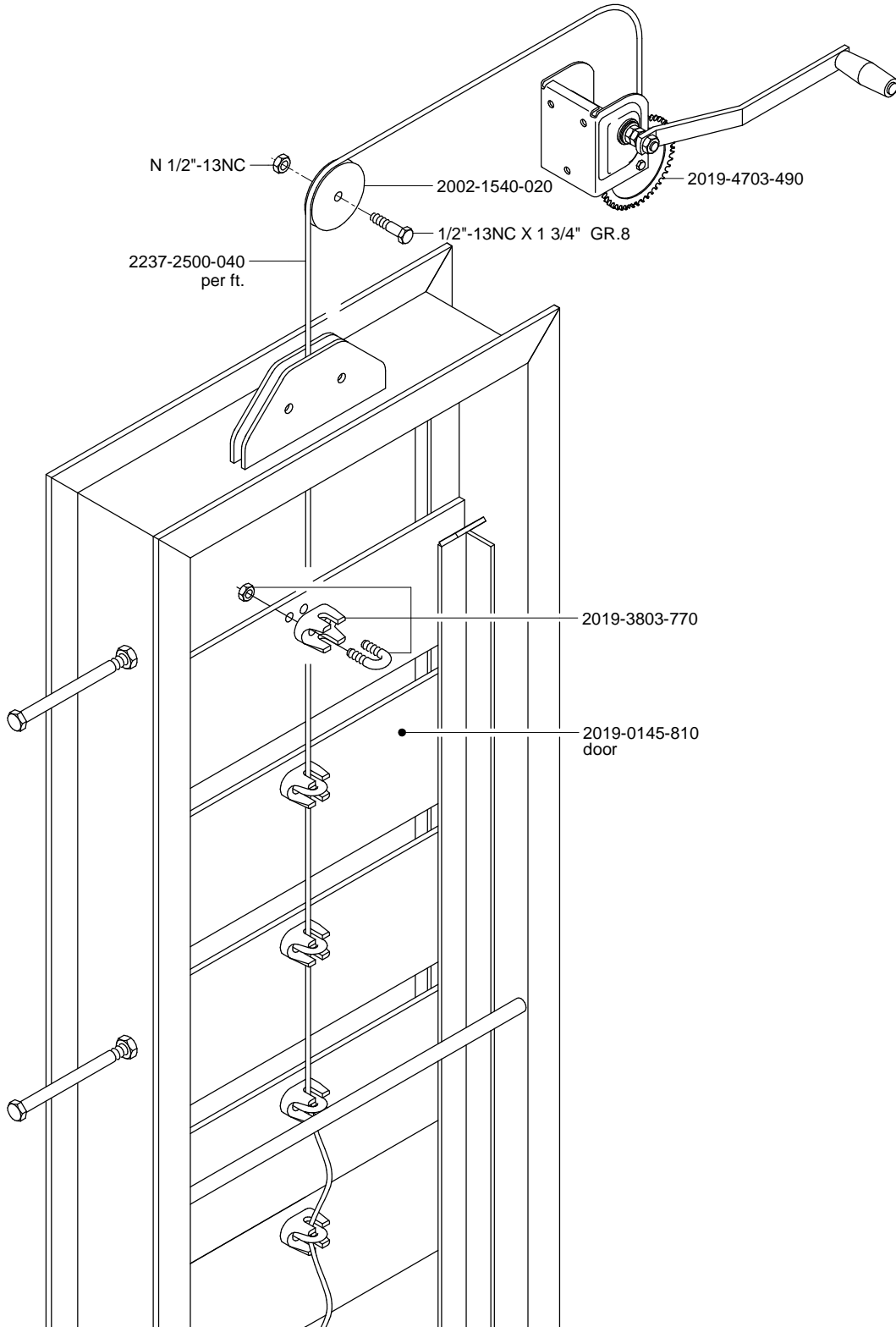


AIR-VACUUM RELIEF VALVE ON 12 3/4" PIPE

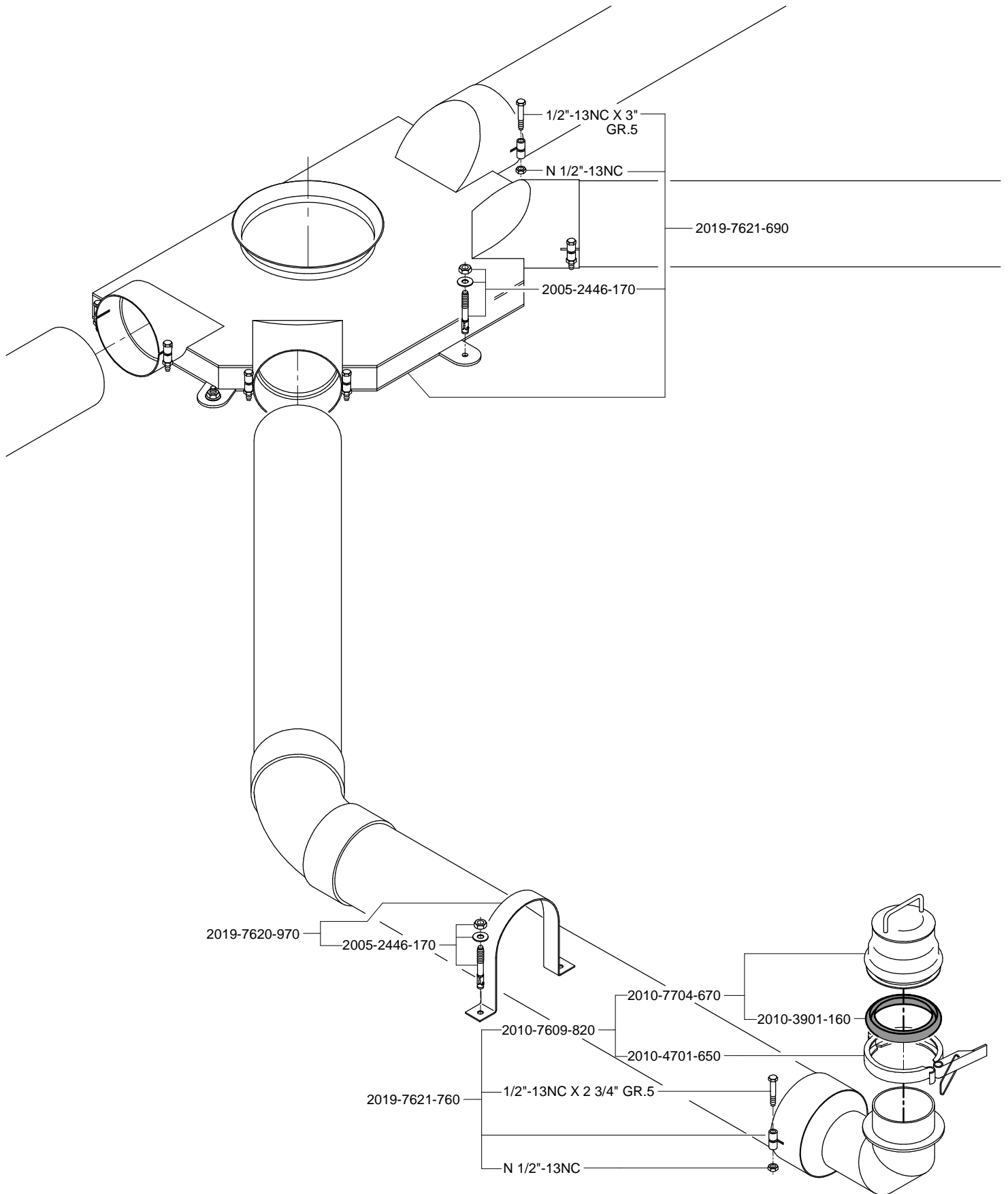
Complete air vacuum

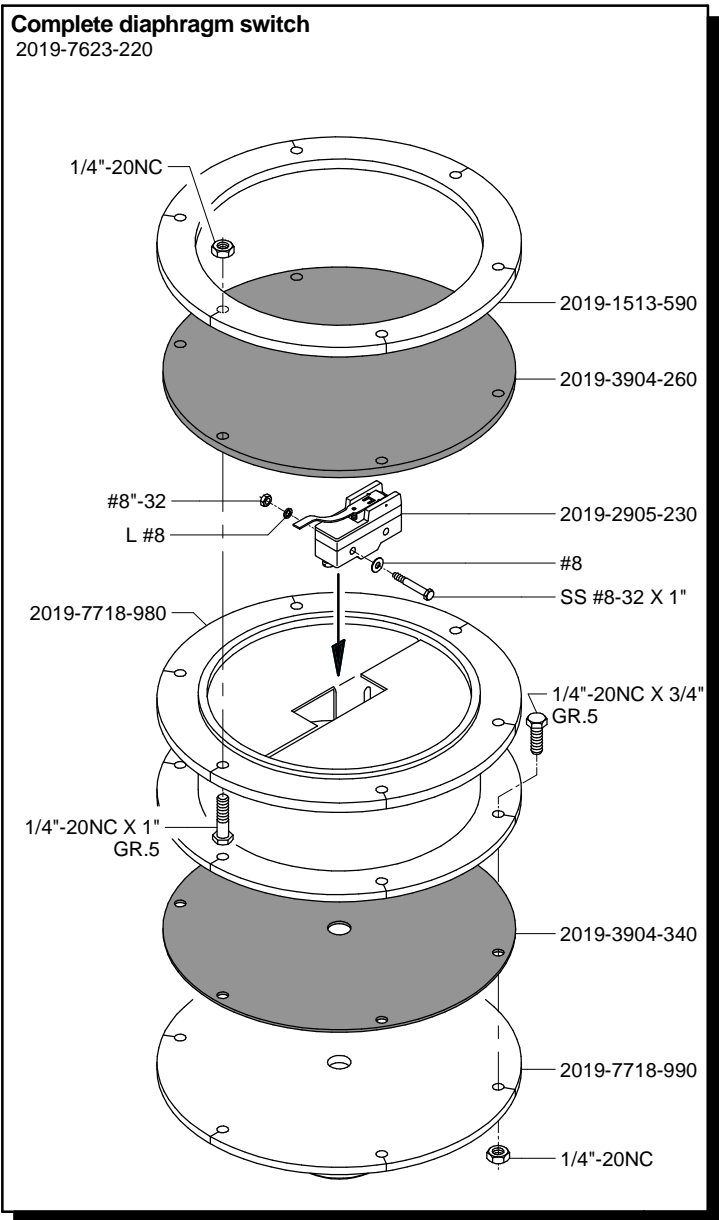
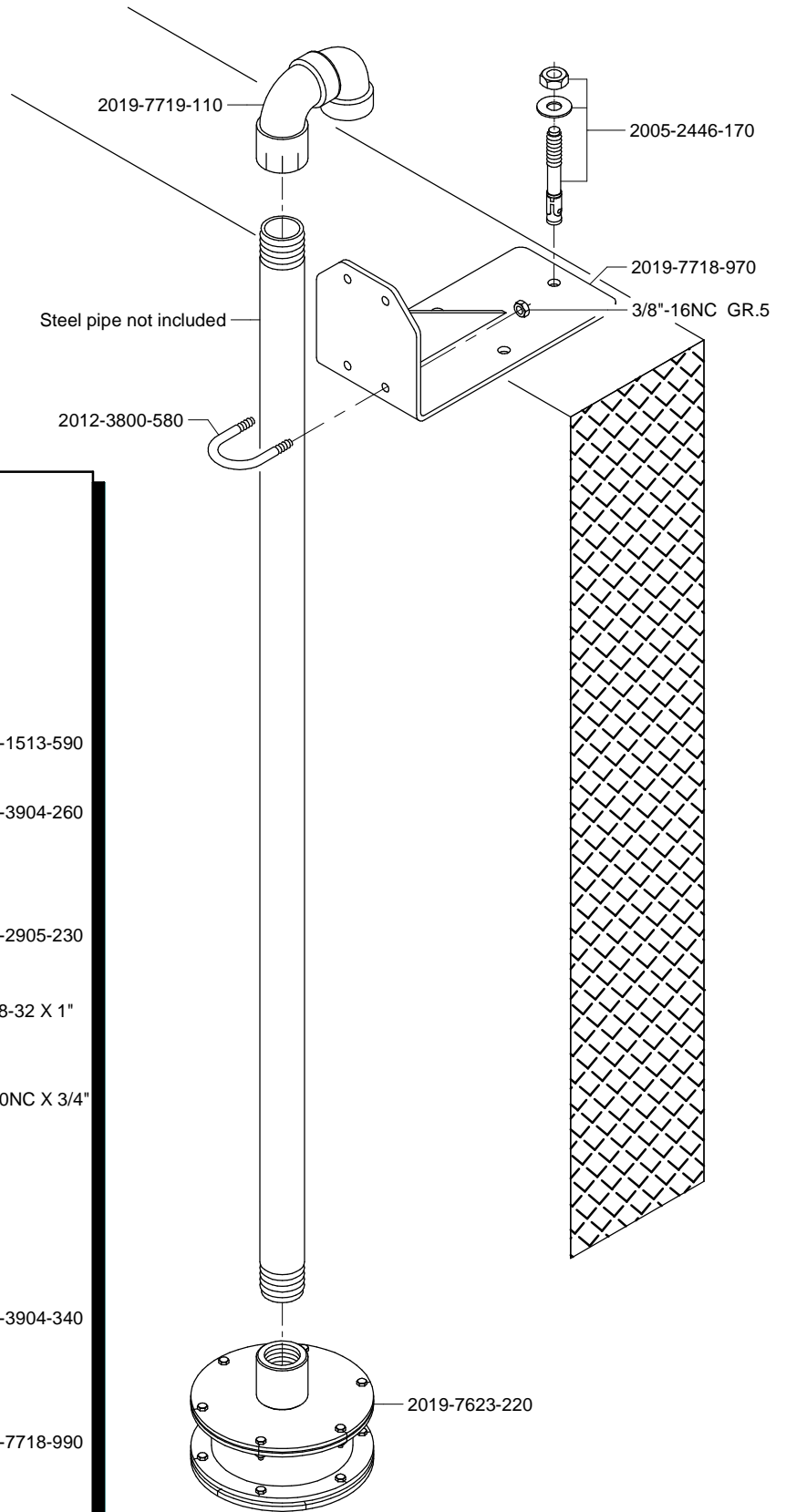
2019-7620-690



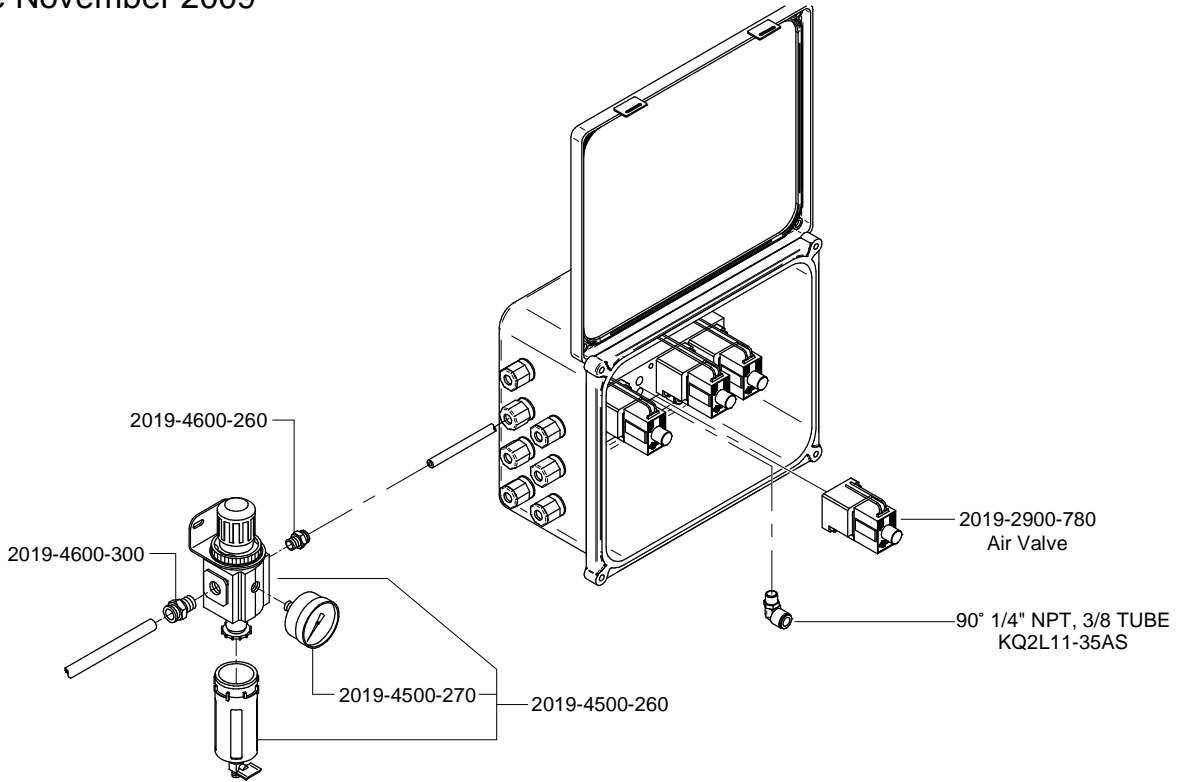


MANIFOLD VACUUM BASE FOR 8 5/8" PVC PIPE

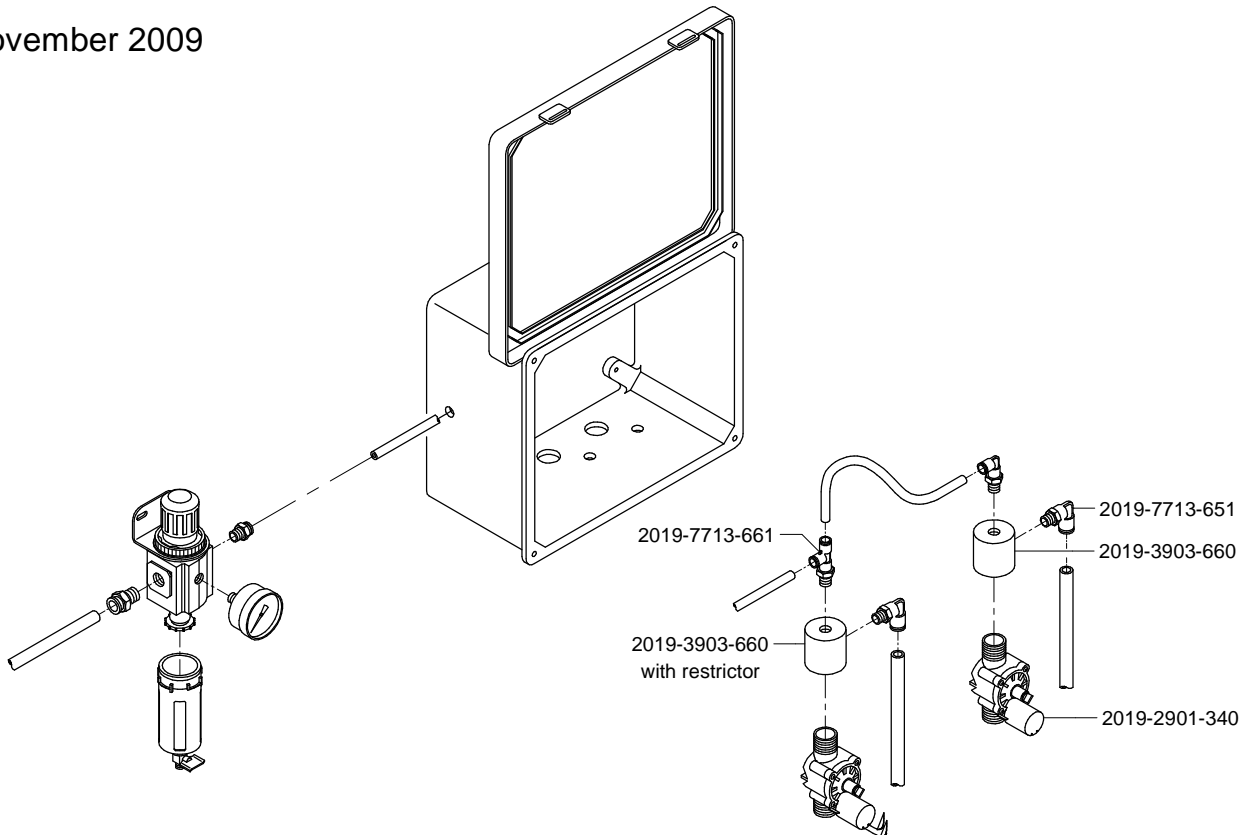




Since November 2009



Before November 2009



**12" CIRCULAR FLUSH VALVE
(PREVIOUS VERSION)**

Note: - Circular flush valves are no longer available since 2001. The cover plate can be replaced if required.
 - All parts identified on this page are subject to stock availability

